



# BUILD TO EQUIP

---

4:12 Center Capital Campaign  
College Baptist Church



# TABLE OF CONTENTS

03 *Letter from Pastor Ben*

04 *Architectural History*

06 *Build to Equip: Our Vision*

07 *Ministry Benefits*

08 *The Design: Conceptual Renderings*

12 *The Funding Plan*

13 *Frequently Asked Questions*

14 *Next Steps*

15 *Thank You*

## Dear College Baptist Church Family & Friends,

On January 5, 1868 a congregation met to dedicate a building described by one newspaper as “the largest Baptist church in the west.” That majestic structure, located on the corner of Manning and Fayette Streets, has been the home of faithful Gospel ministry for over 150 years. It’s unlikely that the men, women, boys, and girls gathered that day could have imagined the eternal magnitude of their investment. We are the beneficiaries of their sacrificial gifts.

**Now it is our turn make an investment of our own.** For over a century and a half this building has served us well; but it was obviously not built according ministry standards of the 21<sup>st</sup> Century. The **4:12 Center** has been designed to complement our historic building that we might better “equip the saints for the work of ministry, for building up the body of Christ.” (Ephesians 4:12) By providing additional educational, fellowship, and administrative spaces that are accessible to all, we will **enhance** our ability to serve to our multi-generational congregation, **train** college students for ministry, and **reach** our neighbors and the nations with the Good News of Jesus Christ.

It is my privilege to invite you to join me in prayerfully considering your role in the “Build To Equip” capital campaign as we seek to make the 4:12 Center a reality. This campaign affords us the opportunity to imitate the generosity of our great God and to see him provide in miraculous ways. May He grant us success in this great endeavor so that we might have the privilege of benefitting many generations to come.

To God Be The Glory,



**Pastor** Ben Cuthbert



# AN ARCHITECTURAL HISTORY OF COLLEGE BAPTIST CHURCH

1855



College Baptist Founded as “The First Free Will Baptist Church in Hillsdale, Michigan.” Worship services were held in the college chapel from 1855–1867.

*Photograph courtesy of Hillsdale College.*

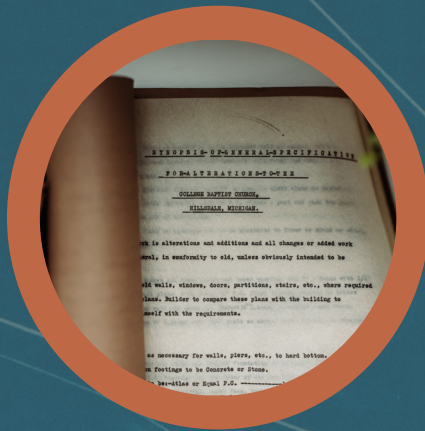
1865

In March of 1865, the trustees of the church voted to raise funds to build a meeting house. In 1865, Professor Ransom Dunn traveled with his son throughout Europe and the Holy Land and studied the cathedrals of the old world. Upon their return to America, Dr. Dunn took his son’s sketches to a Chicago architect who used them to design the church.

1868

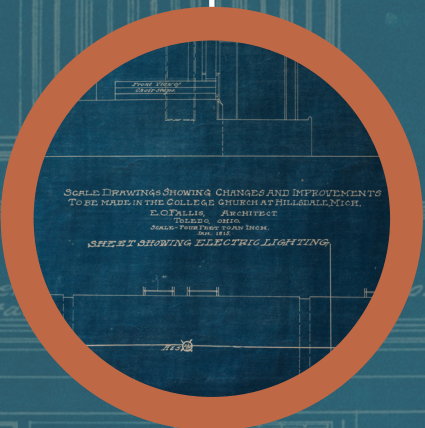


On January 5, 1868, our current building was dedicated. The cost totaled \$23,947.77.



1930

Architect W. E. N. Hunter of Detroit, MI submitted a proposal for a building addition which never came to fruition.



1915

The church underwent major remodeling for \$1,600. In addition to lowering the ceiling to its current height, the electric lighting installed in 1894 was improved. Before the electric lighting, gas lamps illuminated the church, replacing the original oil lamps in 1877.



2005

Lee Short, an architect from Archbold, OH, drew preliminary plans which were completed in 2006. Estimated cost of the structure was \$1.85M, but the plans were abandoned.

1977

A handicap accessible ramp and glass enclosure were added to the north entrance and new pews were installed in the sanctuary.

1952

A fellowship room, now known as the Riker Room, was added to the basement along with an alternative entrance on Fayette Street for approximately \$18,000.



2021

The congregation voted unanimously to hire professional experts to engage the congregation and assist the building committee in designing the 4:12 Center.

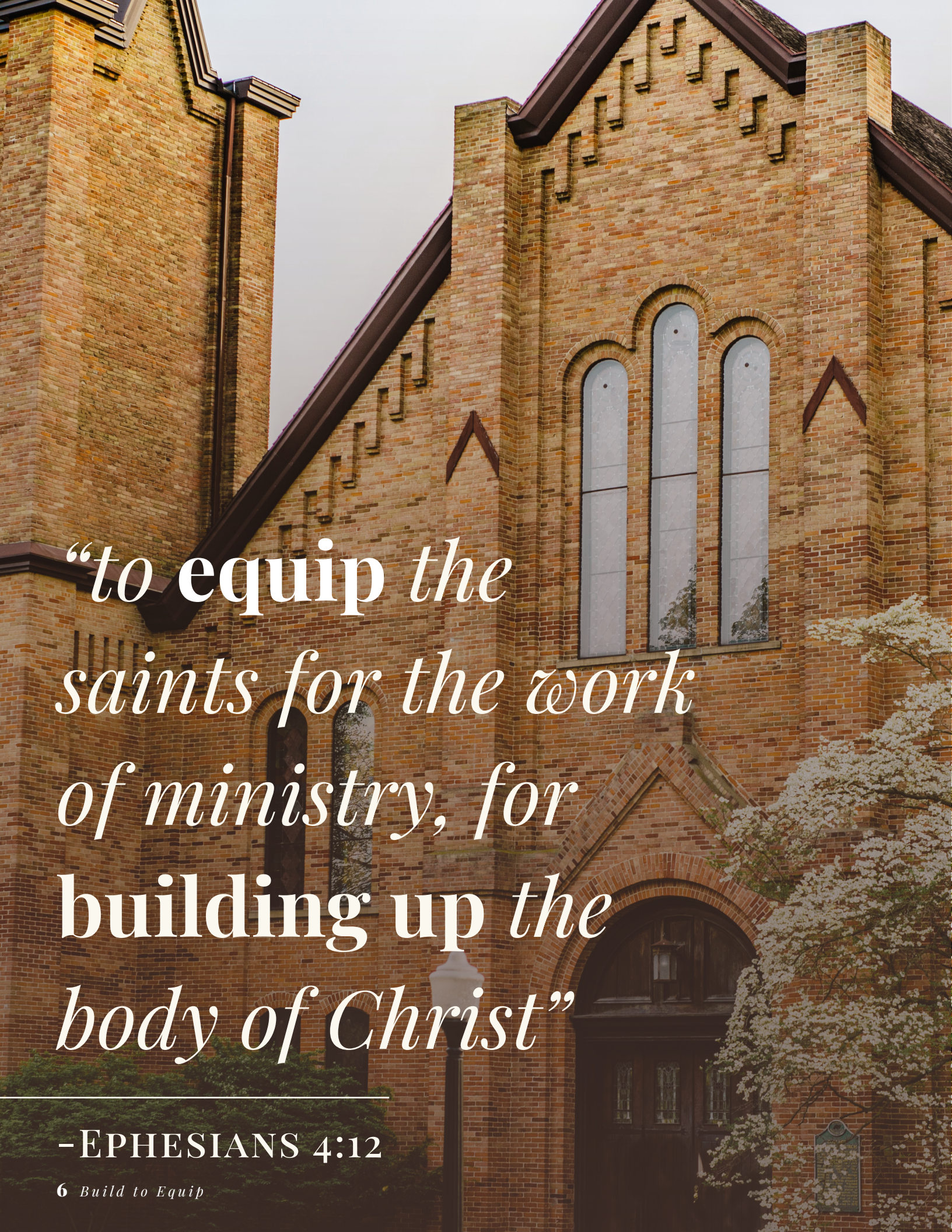


2022

The schematic designs and projected costs were revealed and the Build to Equip capital campaign was launched.

2015

After resuming discussions about an addition in 2009, the Elders first proposed the name “4:12 Center” based on Ephesians 4:12.



*“to equip the saints for the work of ministry, for building up the body of Christ”*

-EPHESIANS 4:12

6 *Build to Equip*

*Decades of dreaming...  
15 years of groundwork...  
A fresh start.*

## OUR VISION: THE 4:12 CENTER

to Equip the Saints  
for the Work of Ministry  
for Building up the Body of Christ  
for the Glory of God

## MINISTRY BENEFITS

Our current building has inaccessible and inadequate facilities for fellowship meals, educational classrooms, gathering spaces, administrative offices, and restrooms.

The goal of the 4:12 Center is to build up the body of College Baptist Church *in maturity* and *for multiplication*.

### *Maturity*

- Accessibility to build a multi-generational body
- Fellowship meals to build deep relationships
- Educational classrooms to build sound doctrine
- Gathering spaces build Christ-like hospitality
- Administrative offices build pastoral care

### *Multiplication*

- Accessible to all
- Hospitable to our local community
- Engaged in intentional evangelism
- Committed to training future leaders
- Prepared for growth in ministry staff

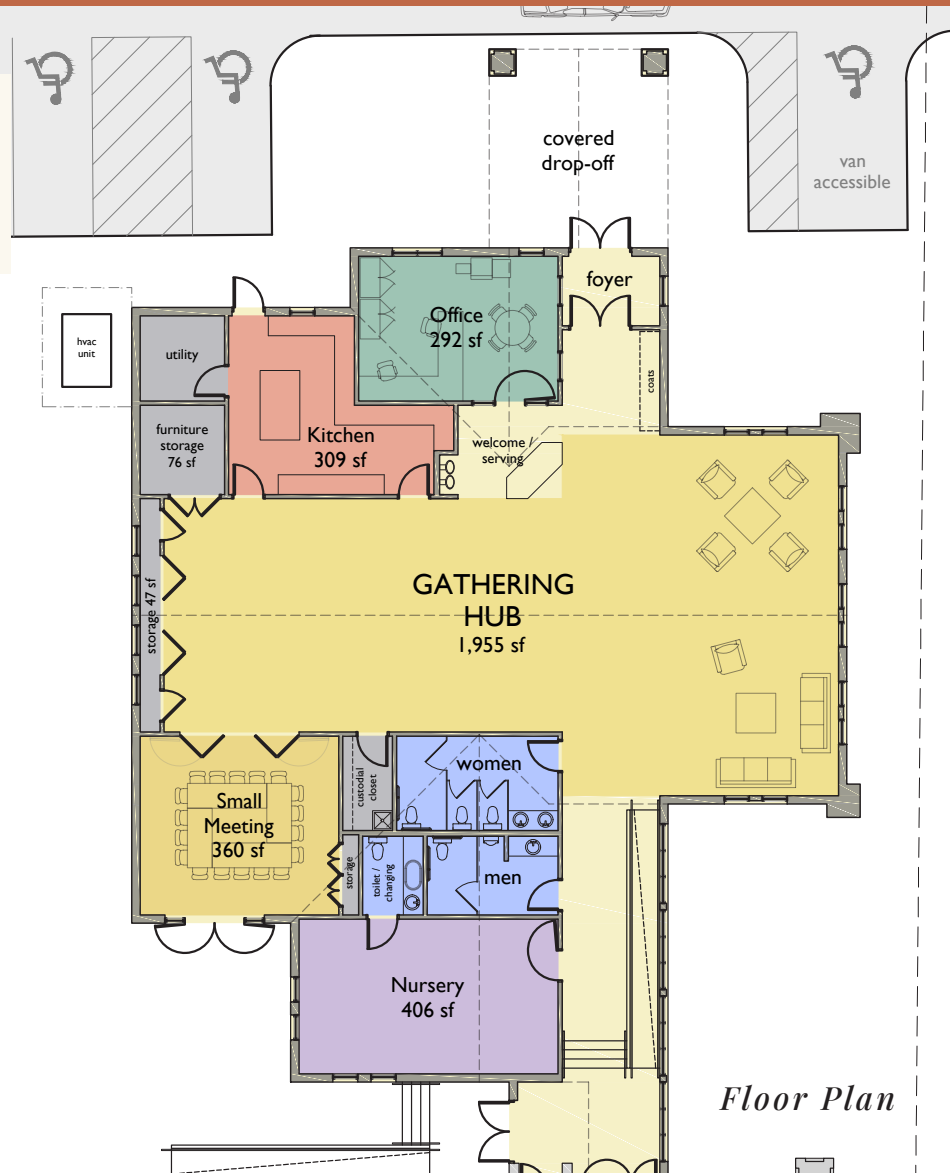


# THE DESIGN: CONCEPTUAL RENDERINGS

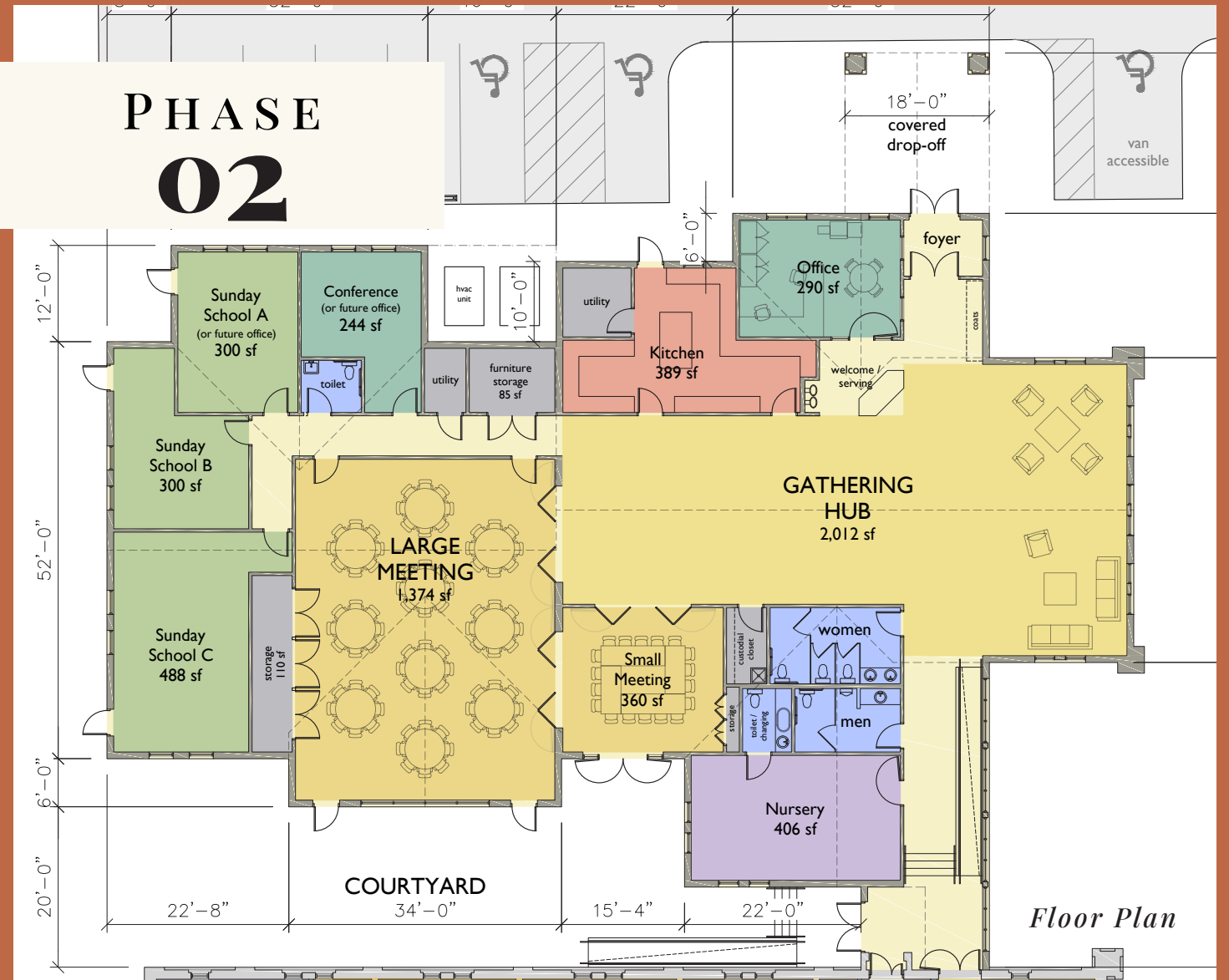
*Our goal: a variety of spaces with well-lit, spacious, and dedicated rooms that are flexible and serve our expanding needs.*



# PHASE 01



# PHASE 02





### How much will it cost?

**Total Phase 1:** \$1.8–2.1M  
**Total Phase 2:** \$0.9–1.0M  
**Grand Total:** \$2.7–3.1M

## THE FUNDING PLAN: HOW WILL WE PAY FOR IT?

### Phase 1 Funding Plan\*

|  |                           |
|--|---------------------------|
| Restricted Building Addition Fund..... | \$419,000                 |
| Restricted Building Fund.....          | \$68,000                  |
| Restricted Multimedia Fund.....        | \$24,000                  |
| Debt Capacity .....                    | \$383,000                 |
| Total Fundraising Need.....            | \$1,115,000               |
|  | <b>Total: \$2,009,000</b> |

*\*Fund balances as of March 31, 2022.*

The **Chart of Gifts** (see insert) will help you understand the number and type of three-year commitments we need to achieve our capital campaign goal. This chart emphasizes that we do not expect everyone to make **equal** amount. We simply ask that you prayerfully consider what God would have you sacrificially give according to your means. In this way, though the size of gifts will differ, we are all **sacrificing equally**.

## FREQUENTLY ASKED QUESTIONS

### What is expected of my family in making a financial commitment?

The only thing expected of each family is to pray about what God would want to do through them, and to be willing to follow where God leads.

### Can I divide my current giving between the General Budget and the Capital Campaign?

The ministries, missions, and general operations that we currently support still need to be funded, so we ask that you not transfer current giving to the Capital Campaign, but rather give “over and above” to the campaign.

### Do I have flexibility in fulfilling my financial commitment?

Yes. There are three general categories under which you can make your commitment: 1) Immediate gifts from accumulated cash, 2) regular weekly or monthly gifts of a specified amount over the next three years, and 3) non-cash assets such as property, stocks, bonds, etc. Our Creative Gifts Chair, Doug Banbury, can discuss this with you, or you can consult your personal tax advisor.

### Can I designate my gift to a specific area or portion of the project?

Please do not limit your gift by designating it to anything other than the 4:12 Center as a whole. This gives the Building Committee the most flexibility in making sure we get the 4:12 Center built and usable.

### When, where, and how will the commitments be made?

Most commitments will be made in writing on Commitment Sunday during our church service; however, leaders will give their written, sealed commitments to Bill Gray, the Campaign General Chair, or to the church office on or before May 8, 2022. On Commitment Sunday, you will seal your financial commitment in the provided envelope. Only the church Bookkeeper, Joanna Young, will see commitment amounts.

### Why do I need to make my commitment in writing?

The total commitment amount will be used to finalize the exact scope of the 4:12 Center building project and to establish a realistic construction budget and timetable. Written commitments let us move forward with confidence.

### Why is my name requested on the Commitment Sheet?

We assume that if you rely on God and make a commitment in good faith, you will complete it without any further contact from church leaders. However, there are some practical reasons for having names on commitments:

- **Confusion.** Having a name allows the person tabulating the commitments to clarify any indecipherable commitments sheets before reporting totals to the congregation.
- **Loan Requirements.** If the 4:12 Center funding plan will require bank financing, it’s not unusual for the lender to ask whether the church has signed pledges in hand (unsigned pledges would be less positive for the lender).
- **People Forget.** Over the course of a three-year timeframe, it is not unusual for a few people to lose or misplace the personal copy of their commitment. Without names, it is impossible to provide a reminder to anyone, even at their own request.

### Will I be asked to state my commitment publicly?

Absolutely not! Your commitment is a private matter between you and God. We will not make these commitments a matter of public knowledge in any way. The total amount pledged by the end of the campaign will be reported to the congregation, but not individual donors.

### If I should fall behind, what will happen?

We most certainly will not take any action to collect on a voluntary financial commitment. We simply ask that you pray and seek God’s guidance as to what He would have you commit to Him. If you need to revise your commitment later, please do so in writing so the church leadership can revise their financial projections.

### When do I start giving toward my commitment?

Giving toward commitments begins on Celebration Sunday, June 5, 2022, or based upon the timing you designate on your Commitment Sheet and according to your income schedule. Please use the giving envelopes located in the pews, include your name, and designate your gift as a “Campaign Pledge.”

## WHAT DO I DO NOW?

### Pray

Pray that God would lead in your decision to make a commitment that represents personal sacrifice.

### Discuss

Discuss your commitment with your spouse and/or other members of your family.

### Commit

Complete the Commitment Sheet and place in the envelope provided.

### Respond

For those attending the Advance Challenge Meeting: Return your sealed envelope personally to Bill Gray or the church office by May 8.

For the congregation: Return your sealed envelope on Commitment Sunday, May 22, during the service, or mail to the church office by May 23.

## Thank You.

Thank you for prayerfully considering your commitment to this campaign. We are ever grateful for your partnership in ministry.

Special thanks to our Campaign Leaders and the following partners: Inform Architecture, Church Growth Services, and Michael Kinder & Sons.

To God be the glory.

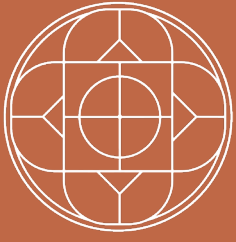


IN • FORM architecture

CGS | Church Growth Services







College Baptist Church  
200 N Manning St.  
Hillsdale, MI 49242  
(517) 439-9931